



**PERCEIVE**

**P**ROSPECTIV**E** R**E**GISTRY OF **C**ANCER AND **E**VENTS **I**NVOLVING **V**ENOUS THROMBO**E**MBOLISM

**{ PERCEIVE REGISTRY  
{ REPORT**

*Your regular update  
(July 2014)*

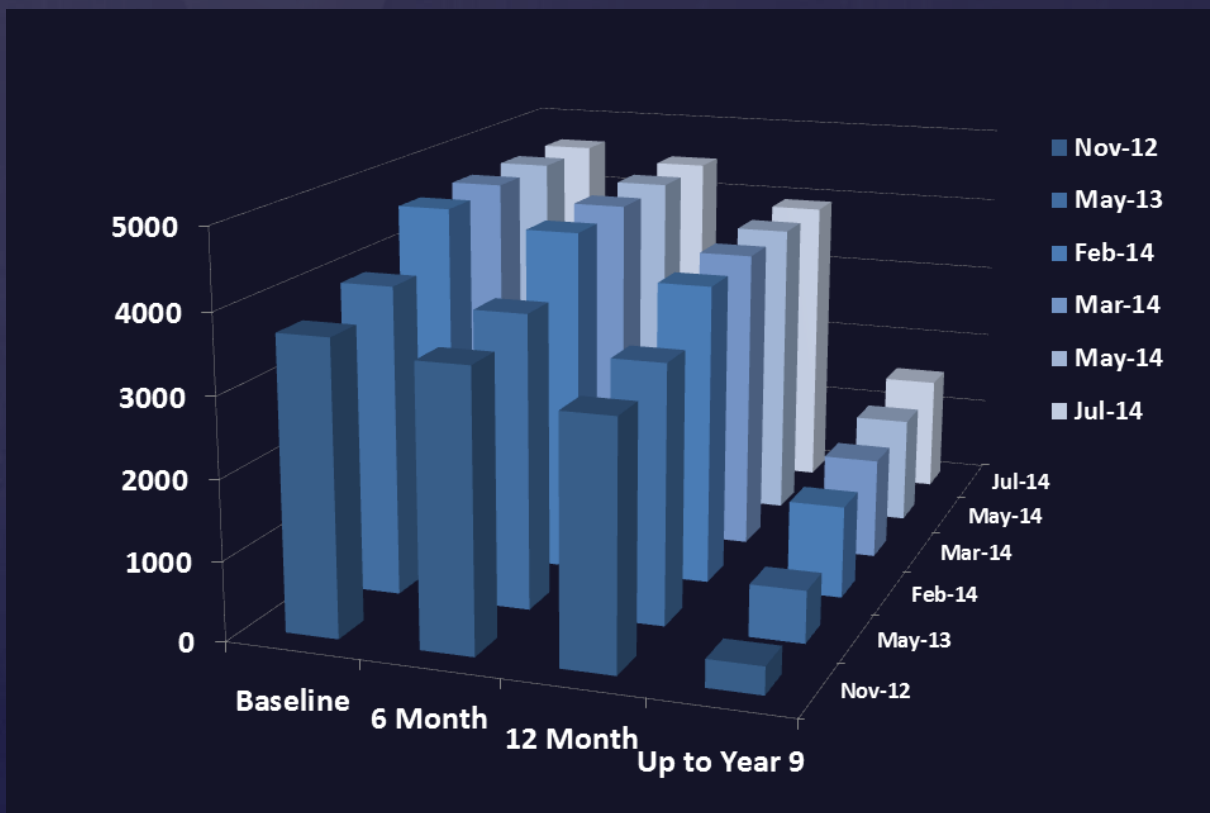
# Your regular update (July 2014)

Please check the July figures below.

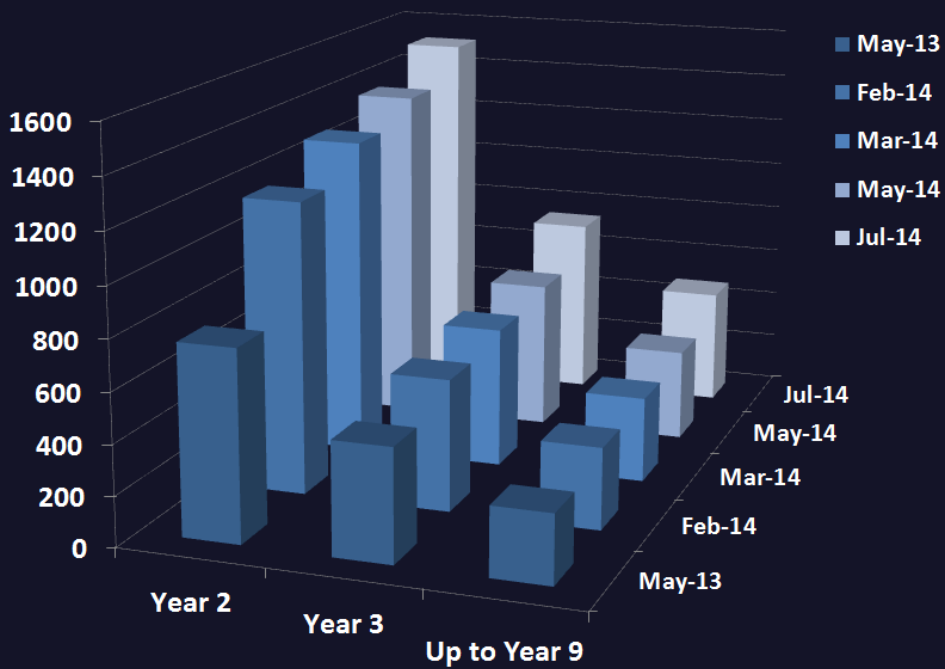
Welcome back to our Singapore CRA who is now fully active and responsible from the beginning for the excellent track record for re-consent and long-term follow-up at Singapore during the Amendment 3 phase.

We are very much looking forward to your comments and suggestions.

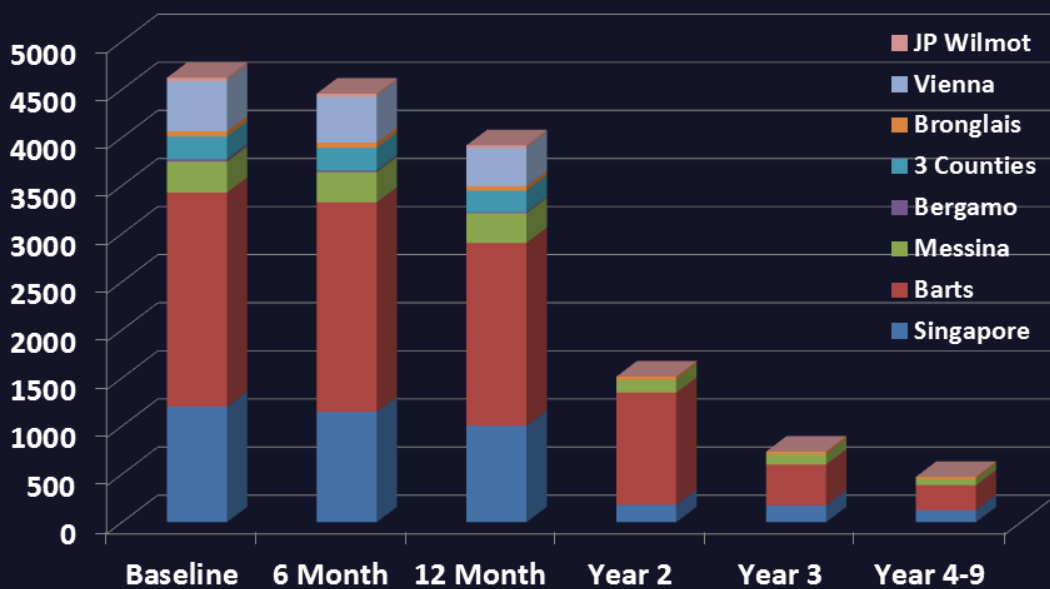
## Data Progression Comparison (November 2012 to July 2014)



## Extended Follow-up (May 2013 to July 2014)



## Overall Follow-up Data (March 2014)



# Follow-up per type at 31 July 2014

