

PERCEIVE

March 2010



Clinical Trials Unit
Thrombosis Research Institute
Emmanuel Kaye Building
Manresa Road
Chelsea
London SW3 6LR
United Kingdom

e-mail: Perceive@tri-london.ac.uk
Tel: +44 (0)20 7351 8395
Fax: +44 (0)20 7351 8324

Medidata Helpdesk / Technical Support

All numbers are Toll Free

E-mail	helpdesk@mdsol.com
Austria	0800677658
India	0008001006771
Italy	800-987-161
Singapore	8001204375
UK	0800-001-5212
USA	1-866-MEDIDATA (633-4328)

International Time Zones

	UTC
Austria	+ 1 hour (ECT)
India	+ 5:30 hours
Italy	+ 1 hour (ECT)
Singapore	+ 8 hours
UK	+ 0 hour (GMT)
USA	- 5 hours (EST)

Active Centres to February 2010

3 Counties Cancer Research Network	UK
Allgemeines Krankenhaus der Stadt Wien, Vienna	Austria
Barts and the London NHS Trust	UK
Bronglais General Hospital	UK
James P. Wilmot Cancer Center	USA
National University Hospital, Singapore	Singapore
Ospedali Riuniti di Bergamo	Italy
Sir Ganga Ram Hospital	India
University Hospital Messina	Italy

Welcome to the new format

Your regular update

It is with great pleasure that we launch this new format for the newsletter and study report; we hope that it will meet your approval and be of help to you. This newsletter is for you.

We look forward to your feedback and suggestions.

Continued on Page 2

NEWS SUMMARY

- 1 Welcome to the new format
- 2 Message to CRA
- 2 Demographic report
- 3 Annual recruitment reports
- 4 Monthly recruitment reports
- 5 CRF completion reports

Message to CRAs

From Dr. Neelam Saba

We finally upgraded to the new version of our Electronic Data Capture System. We are still looking for any problems arising, so please let us know should you experience any troubles with data entry.

Last month two new CRAs were successfully trained in the new EDC version and received their user name and passwords: well done!

I hope you have all been trained in the new system and that your profiles are active. Please e-mail us if anyone one leaves the team or if you have a new team member joining so that appropriate training can be set up.

We are aware that there have been some problems in one site with signing the CRFs on-line: this problem is being investigated. Please let us know if you have experienced the same problem at your centre. Please continue to update us with any issues regarding data entry.

Site monitoring is progressing and I hope you have received our summary of monitoring queries. You should also be able to access the opened queries in the system. It is important that all queries are resolved in a timely manner. Please get in touch with us if you encounter any problems in dealing with them and we'll do our best to assist you.

Welcome to the new format

Continued from Page 1

We will take this opportunity to keep you up to date with the contact details and future developments for this study.

We have included annual study reports for the past years; we are planning to circulate those on a more regular basis.

We have been very pleased with the recruitment progress so far and our database is growing stronger.

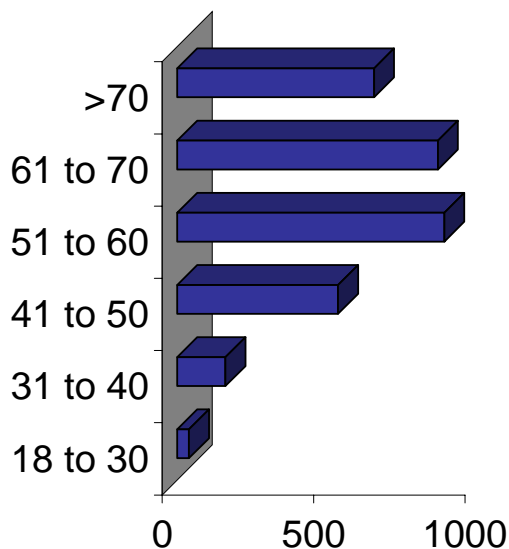
The core site has implemented Amendment 1 and we have been following up our subject for 2 year now.

The plan is to continue following our subject long term to capture good 5 and 10 year F-U data. We are getting this new amendment (3) reviewed by our local ethical committee and will keep you up to date with its progress.

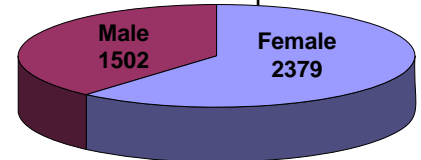
We are looking at site contracts to reflect this and we will update you shortly.

Demographic report

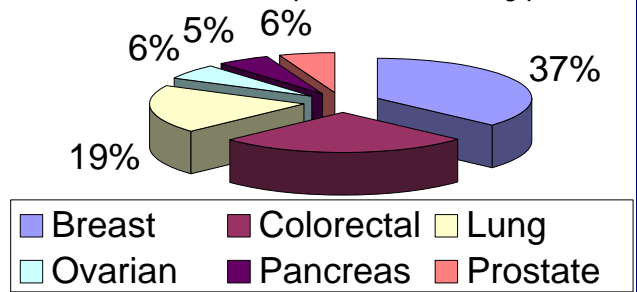
Age distribution per decade



Distribution per sex

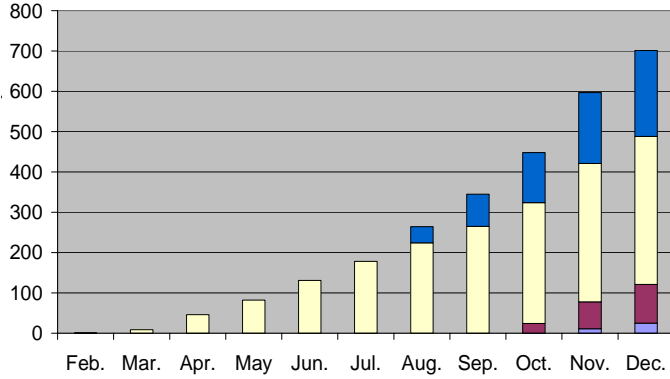


Distribution per cancer type

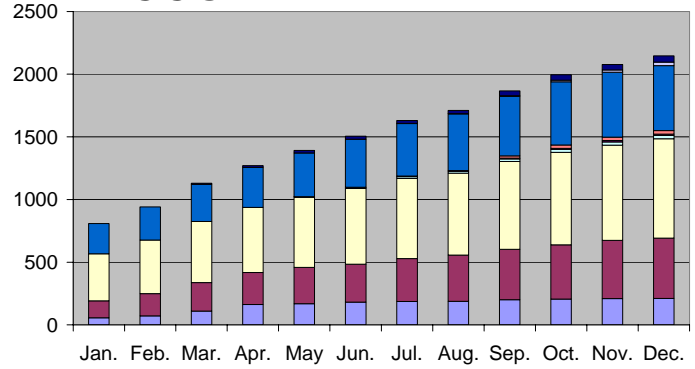


Annual recruitment reports

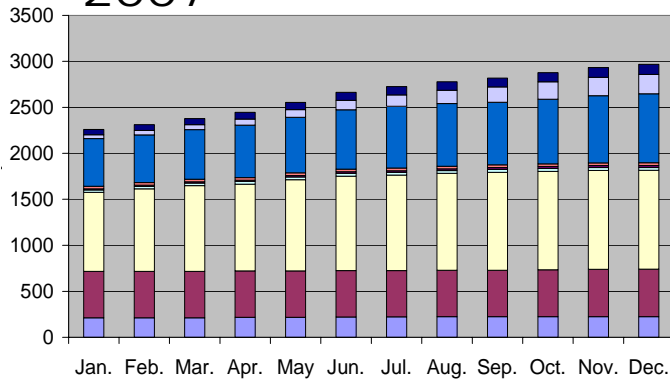
2005



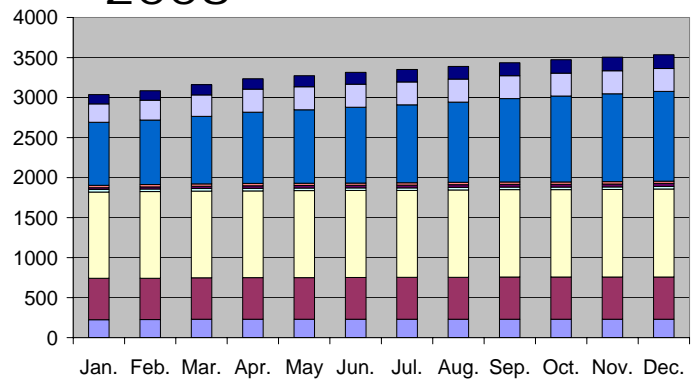
2006



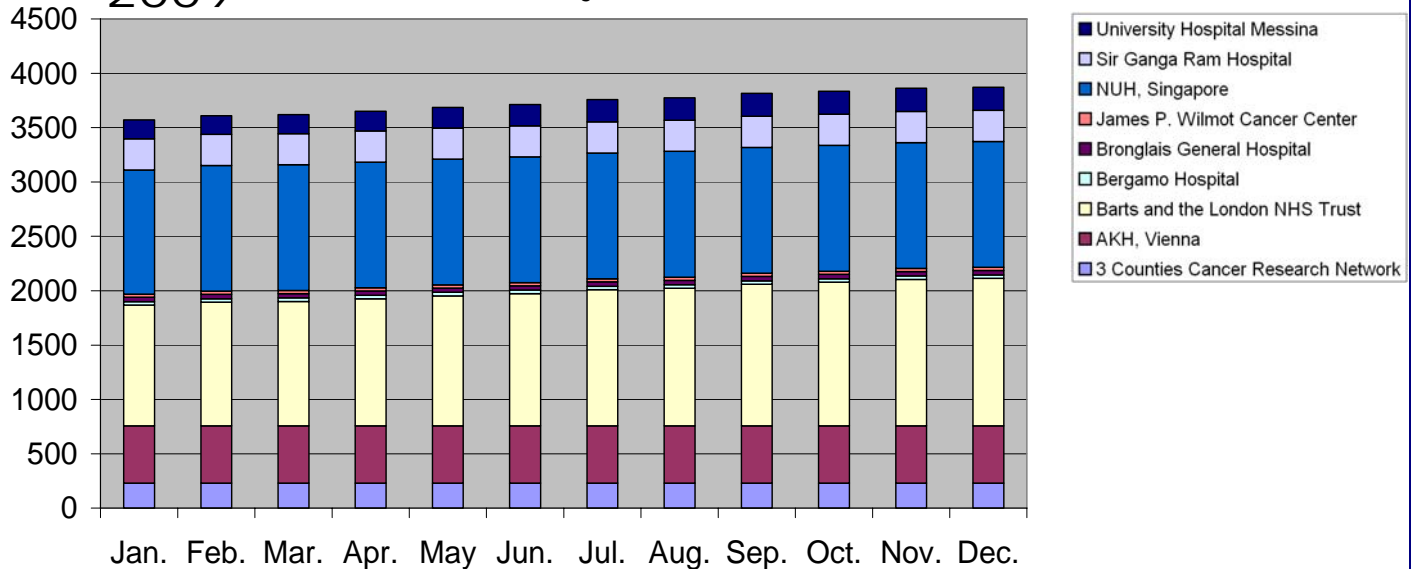
2007



2008



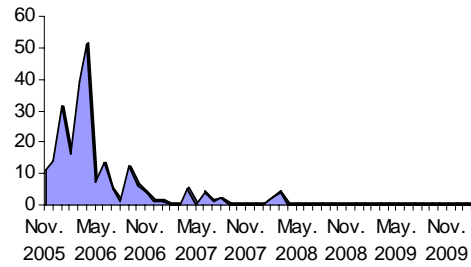
2009 3872 enrolled subjects to the end of December 2009



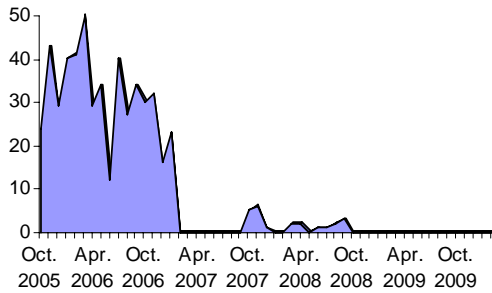
Monthly recruitment reports

(to the 22nd February 2010)

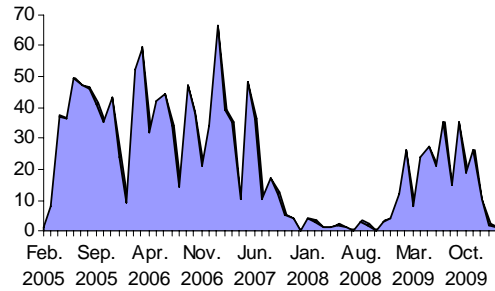
3 Counties Cancer Research Network



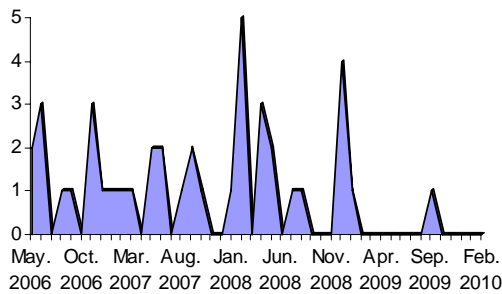
Allgemeines Krankenhaus der Stadt Wien, Vienna



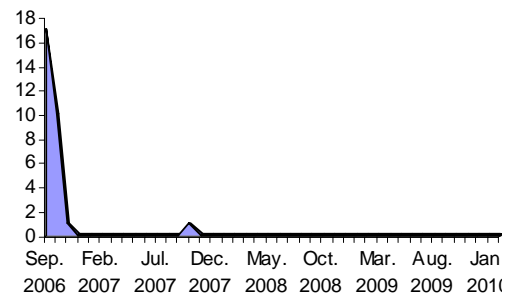
Barts and the London NHS Trust



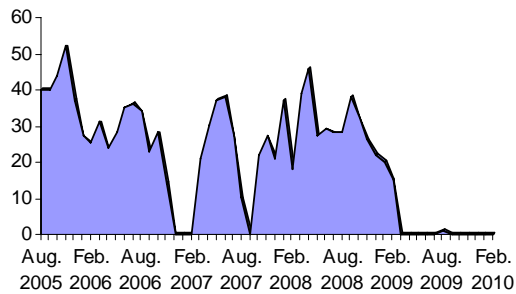
Bronglais General Hospital



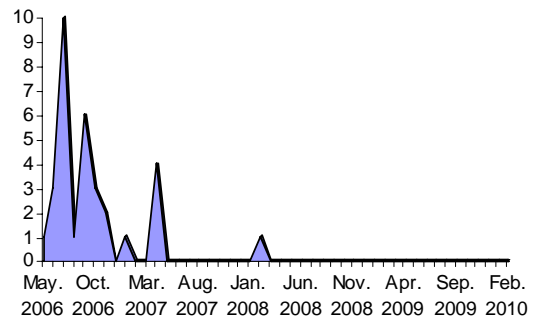
James P. Wilmot Cancer Center



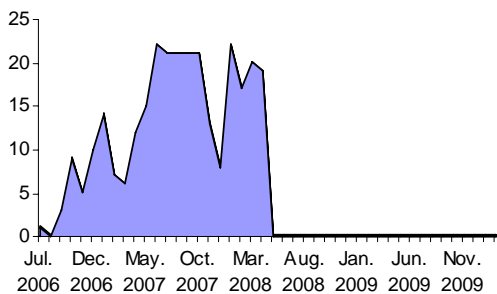
National University Hospital, Singapore



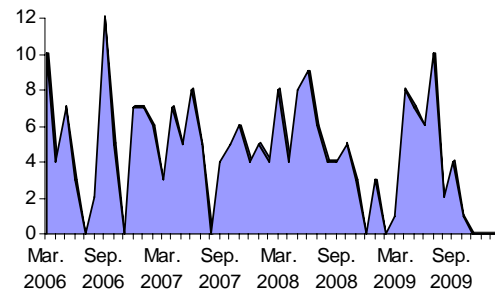
Ospedali Riuniti di Bergamo



Sir Ganga Ram Hospital



University Hospital Messina

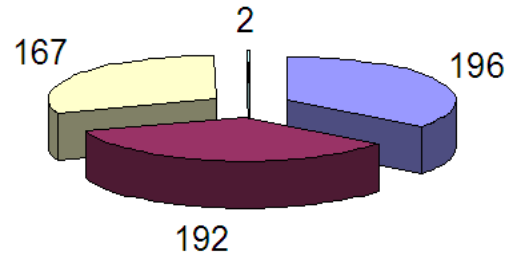


CRFs completion reports

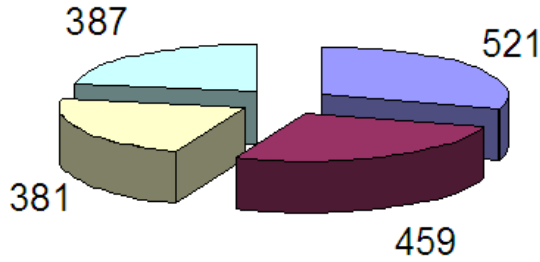
(to the 22nd February 2010)



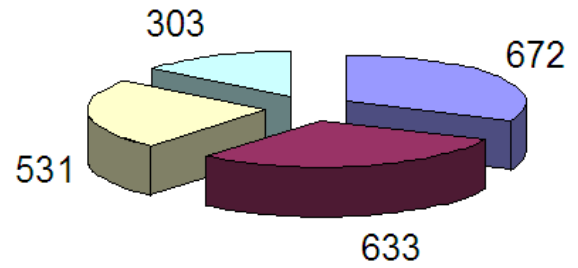
3 Counties Cancer Research Network



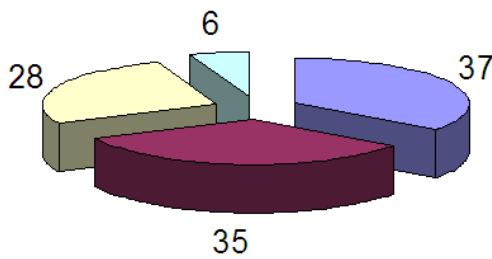
Allgemeines Krankenhaus der Stadt Wien, Vienna



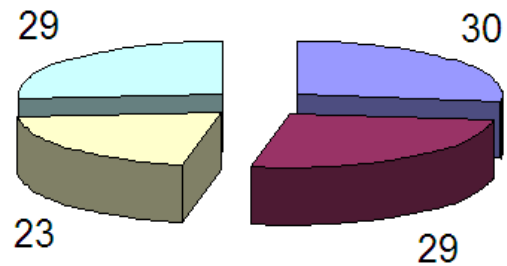
Barts and the London NHS Trust



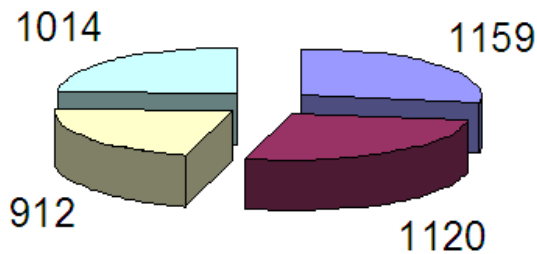
Bronglais General Hospital



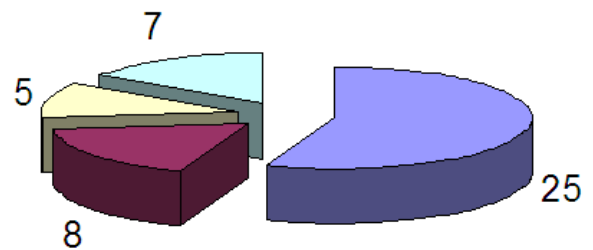
James P. Wilmot Cancer Center



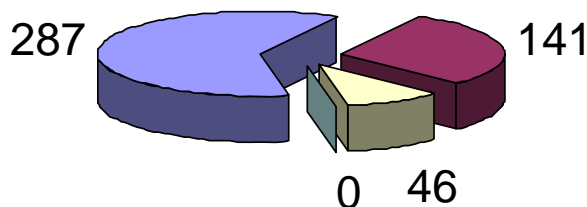
National University Hospital, Singapore



Ospedali Riuniti di Bergamo



Sir Ganga Ram Hospital



University Hospital Messina

