



PERCEIVE

PROSPECTIV**E** R**E**GISTRY OF **C**ANCER AND **E**VENTS **I**NVOLVING **V**ENOUS THROMBO**E**MBOLISM

{ PERCEIVE REGISTRY { REPORT

*Your regular update
(May 2014)*

Your regular update (May 2014)

Please check the updated graphs below.

We are very pleased with the progress on the long-term follow-up data accrued, thanks to the continued support from the PERCEIVE community.

We would like to update you on:

On the great effort from the sites that are actively contributing to long-term follow-up data:

- ⌘ **Barts Health NHS Trust**
- ⌘ **Bronglais General Hospital**
- ⌘ **National University Hospital, Singapore**
- ⌘ **University Hospital Messina**

On maintaining a clean dataset with timely query resolution from the following sites:

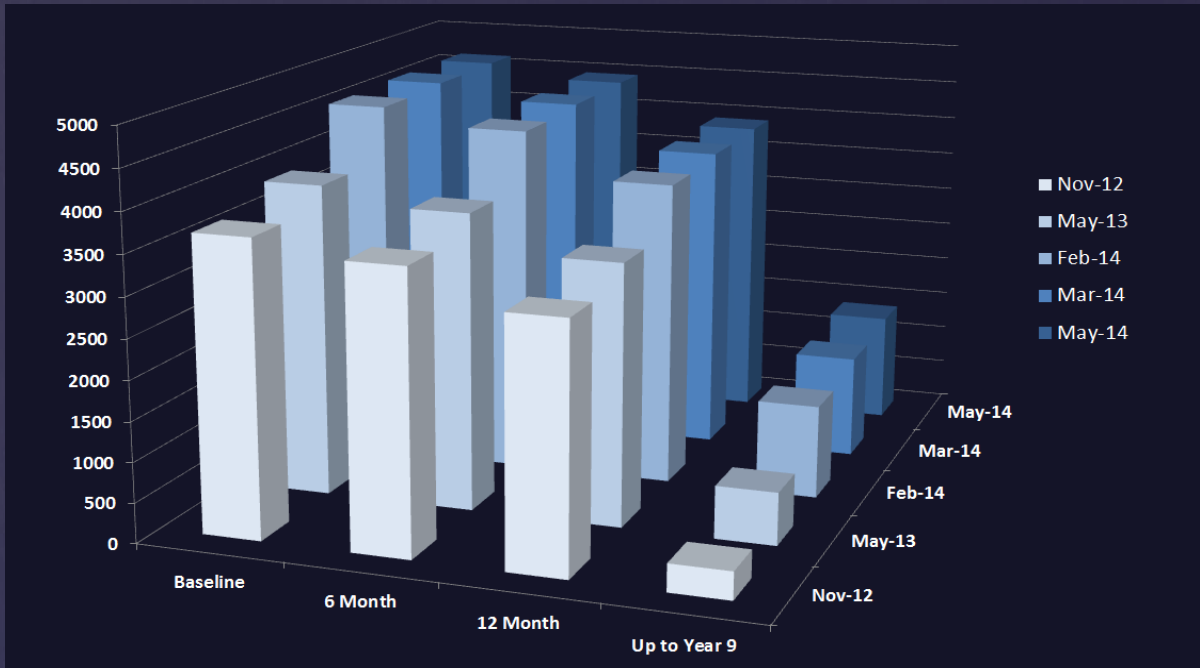
- ⌘ **James P Wilmot Cancer Center**
- ⌘ **Barts Health NHS Trust**
- ⌘ **3 Counties Cancer Research Network**
- ⌘ **National University Hospital, Singapore**

Special mention to

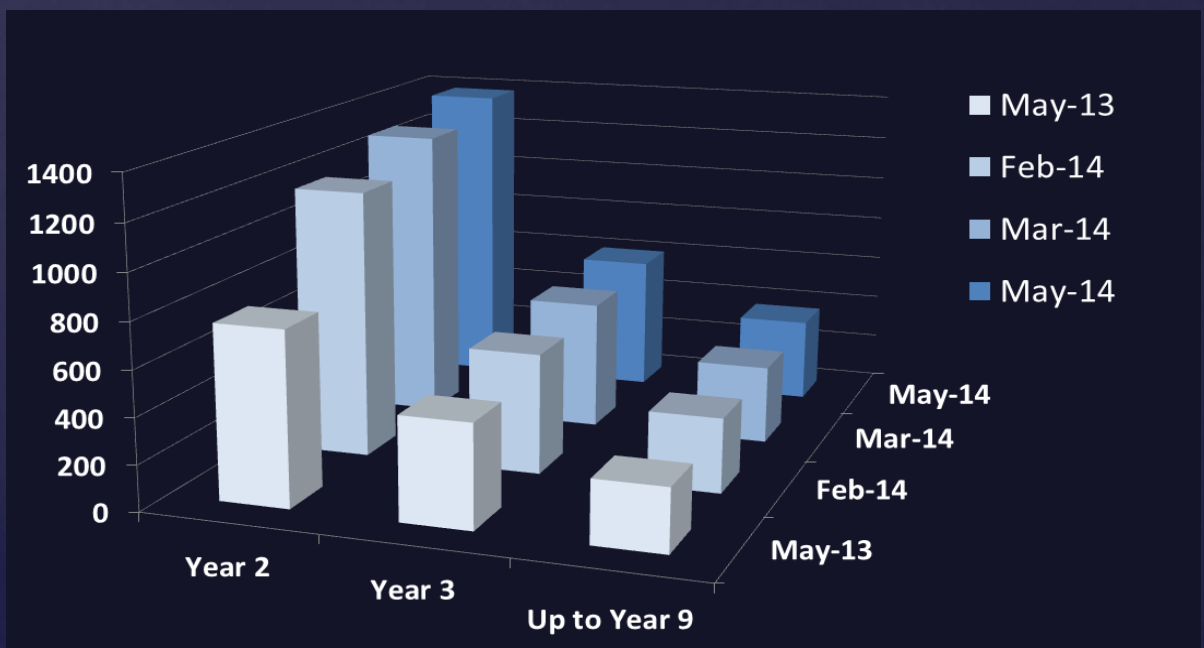
- ⌘ **Rochester (USA)** For their excellent work since our new team member in Rochester started.

Data Progression Comparison

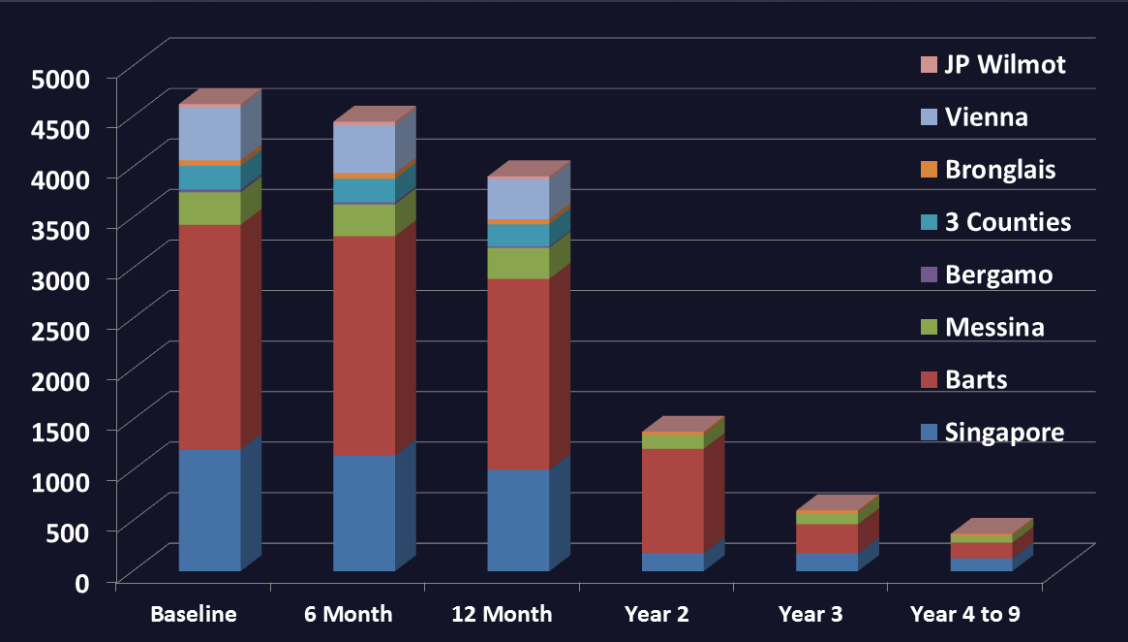
Whole Dataset (November 2012 to May 2014)



Extended Follow-up (May 2013 to May 2014)



Overall Follow-up Data (May 2014)



Follow-up Per Type At 30 May 2014

