



PERCEIVE

PROSPECTIV**E** R**E**GISTRY OF **C**ANCER AND **E**VENTS **I**NVOLVING **V**ENOUS THROMBO**E**MBOLISM

**{ PERCEIVE REGISTRY
{ REPORT**

*Your regular update
(March 2014)*

Your regular update (March 2014)

Please check our updated status, and the progress on accrued data graphs. As you can see there has been further progress on the long-term follow-up data accrued.

The core team would like to thank all the PERCEIVE community for their continued support.

We would like to update you:

- ⌘ Our new team member in Rochester is now fully trained and has started working.

On maintaining a clean dataset with timely query resolution from the following sites:

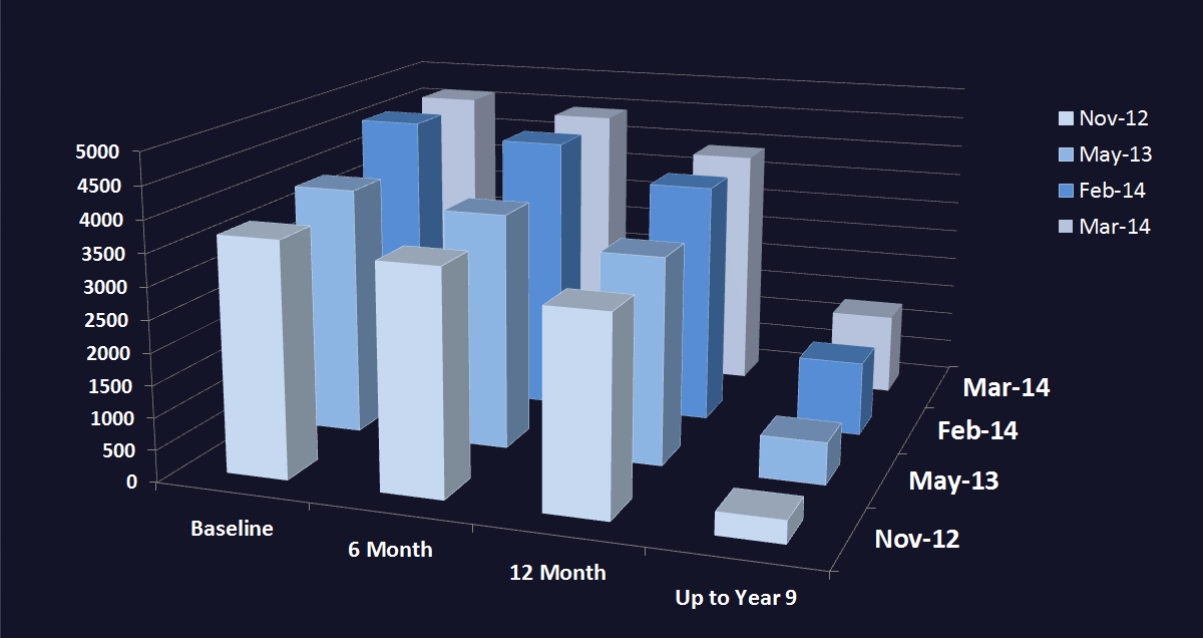
- ⌘ **Barts Health NHS Trust**
- ⌘ **National University Hospital, Singapore**
- ⌘ **3 Counties Cancer Research Network**
- ⌘ **University Hospital Messina**

Their query resolution rates are all very close to 100%.

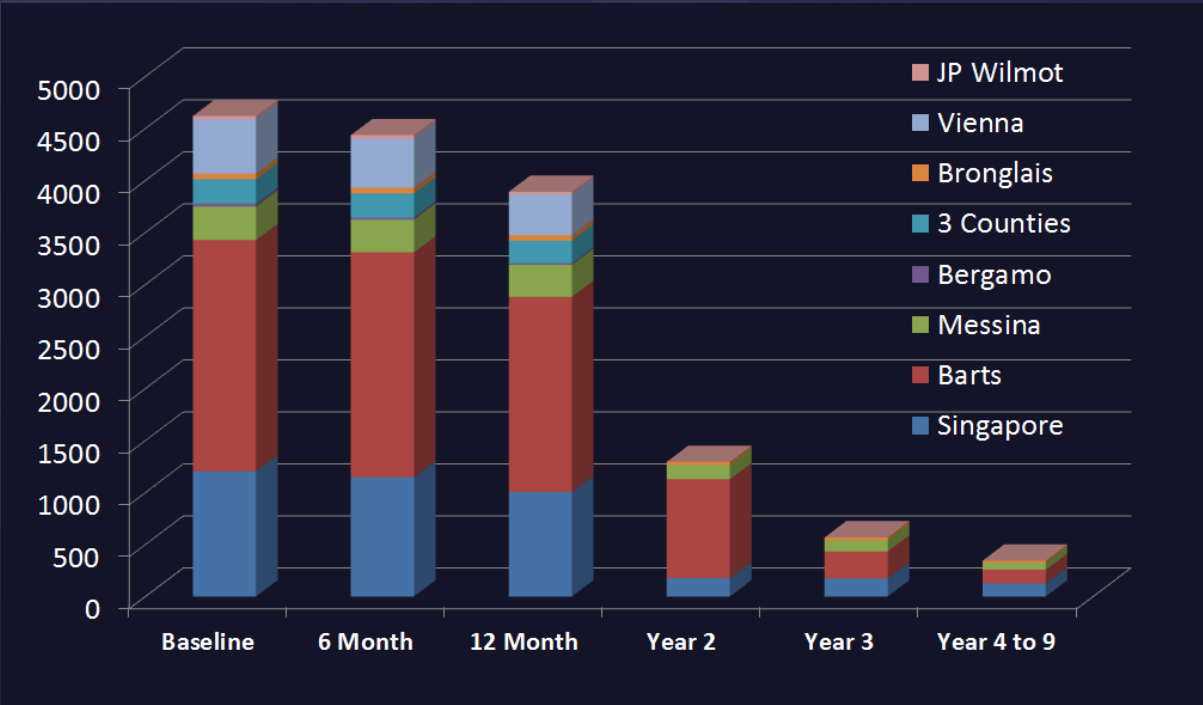
Special mention to

- ⌘ **Bronglais** For their excellent work in collecting long-term Follow-up data, having achieved 78% in the last month. And for having resolved all the historical queries.

Data Progression Comparison (November 2012 to March 2014)



Overall Follow-up Data (March 2014)



Follow-up per type at 30 March 2014

